

Preliminary invitation  
**Nordic IABSE Summit**



**Engineering and Beyond**

**9-10 April 2014**

**Helsinki - Tallinn**

**Finland - Estonia**



## Organizers

### Finnish Group of IABSE



**Prof., Dr. Risto Kiviluoma**  
Chair of the Finnish Group of IABSE



**Mr. Atte Mikkonen**  
Secretary of the Finnish Group of IABSE

The Finnish Group of IABSE is more than sixty years old and one of the oldest national groups inside the IABSE organization. The Finnish Group organised the 1988 IABSE Symposium Helsinki, the 2001 Conference in Lahti, the 2008 Conference in Helsinki and the Workshop 2013 Helsinki. Read more from IABSE: [www.iabse.org](http://www.iabse.org).

### Finnish Association of Civil Engineers RIL



**Ms. Anu Karvonen**  
Director, Products and Services



**Mr. Ville Raasakka**  
Congress Secretary, International Conferences

Finnish Association of Civil Engineers (RIL) is an organization for civil engineers with Master of Science degrees and university students of civil engineering. RIL supports the development of building, urban planning and environmental technology and acts to preserve solid and durable building and maintenance traditions. RIL also supervises the benefits of its members and promotes their professional skills and welfare. Year 2014 RIL celebrates its 80<sup>th</sup> anniversary. Read more from: [www.ril.fi](http://www.ril.fi).

## Introduction and welcome

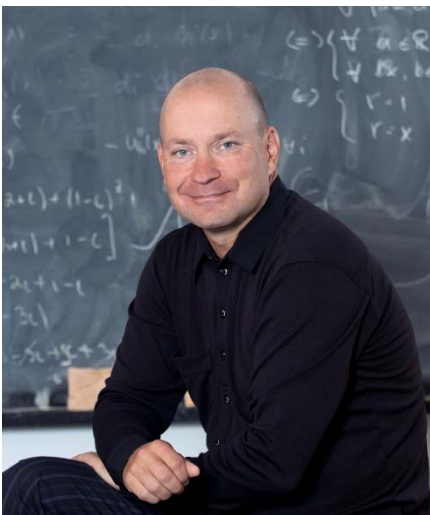
Nordic IABSE Summit *Engineering and Beyond* is new type of event, which cope to locate itself between scientific conferences and annual meetings of engineering societies. Event's program consists on keynote presentations of invited recognized professionals, panel discussions of representatives from various countries, and interaction of all participants. Presenters are not requested to provide scientific papers, but yet the presentations and discussions are targeted to base on the solid background of engineering science; being critical, uncommercial and going straight into the core of matter.

Structural engineering is today facing many changes that are related to globalization, changes in working environment, computer modelling, web based knowledge seeking and quickly renewing standards. Do structural engineers have in the future the professional skills, resources and appreciation that are needed to realise structures, from ordinary to engineering masterpieces, that fulfil the needs of the society? Do they have time, and does they employer support, lifetime lasting training of professional skills? Will tomorrow's structural engineering be only routine computer modelling, which is get where the cheapest available? Structural engineering organisations, like IABSE worldwide and RIL in Finland, are facing this kind of questions when renewing their strategy.

Engineers and experts across all affiliations have less time to put on training and being engaged in professional organisations. When they leave their workplace for training or networking, they should be server the best. Many still appreciate the face-to-face meeting and socialise with colleague, despite the fact that more and more networking in done in through the web. Participating formal annual meetings of engineering organisations attract only few young engineers. More professional significance and benefit should be gained, like we wish to serve in this Summit.

In addition to above questions, Nordic IABSE Summit plan to be versatile forum to bring out any emerging topics in structural engineering. No matter if the questions are eternal or rose on a construction site last week; answers could be sought and declarations given. The Nordic countries share the same geographical location and structural engineering traditions. They have similarities in society and economies too. This hopefully gives not only quick access to the Summit but also effective understanding and answer seeking to the issues raised. Finally, as part of the Summit, we are happy to visit Tallinn, Estonia, where structural engineers have significant role of not only building new, but also rehabilitating and renovating the structures belonging to the cultural heritage.

We heartily welcome you on board to the Nordic IABSE Summit!



Prof., Dr. Risto Kiviluoma  
Chair of the Finnish Group of IABSE



Ms. Helena Soimakallio  
Managing Director, Finnish Association of Civil Engineers

## Purpose of the summit

The summit theme *Engineering and Beyond* refers to recent and future challenges in structural engineering. The purpose of the summit is to provide a meeting point and discussion forum to any professional working in the field of structural engineering or employing services by the structural engineers. These include engineers, architects, developers, researchers, teachers and association representatives. Summit is targeted to everybody from young professionals to eminent: each opinion and viewpoint is important to address the theme.

Keynote speakers are invited as multidisciplinary bases and aim to present the best skills and experience on their field. This gives the participants a possibility to learn new ideas and best practices.

The summit includes general panel discussions where the stage-of-the art and future trends can be reviewed. If urged, the summit can gather statements or recommendations towards IABSE and national structural engineering associations. These may include recommendation for arranging future events or other modes of collaboration on specific topics.

The summit is an international engineering event that by its size is between associations' annual meetings and engineering conferences. It aims to be more versatile and flexible to address emerging professional issues than scientific conferences; both for the invited speakers and for the participants. The arrangements are made tailored to provide easy access to Nordic participants. Intention is not to establish new sequence of Nordic IABSE events in addition to national and international ones. The summit is part of organisers' plan to better serve the needs of the structural engineers by arranging international engineering science workshop or conference every other year and smaller, more adaptable, international event meanwhile.

Arranging of international events is particularly attractive to Finnish group of IABSE, as the structural engineering is currently rapidly globalising in Finland. Factors affecting to these include the European Union the related harmonised design standards; internationalisation of structural engineering companies; utilisation of product modelling and design software; and start of usage of English language and employment of foreign scientifically-oriented professors for higher level university education.

## Programme

Program consists two days of invited key-note lectures, panel discussions and technical tour. Key-note speakers will be international. Keynote program will be published on the summit web site and in the final program.

Summit venue is split to two capitals, Helsinki and Tallinn, including two sea voyages between. Overnight is spent in the ship while the return is with the fast ferry.

Program starts at Wednesday 9<sup>th</sup> noon. In the afternoon, participants are moved to ferry for trip to Tallinn, Estonia. Participants accommodate to the cabins of the ferry and buffet dinner is will be served. Key-note presentations continue in the morning Thursday 10<sup>th</sup> in the seminar rooms of the ferry. After the morning lectures, technical tour is arranged to the Seaplane Harbour Museum, including renovated hangars with large size concrete shell structures. (Lunch in the ferry)

Return to Helsinki is by fast ferry reaching the Helsinki harbour Thursday 10<sup>th</sup> at 15.30.

## Wednesday April 9<sup>th</sup>

RIL, Töölönkatu 4, Helsinki, Finland

10:00 Annual meeting of the Finnish group of IABSE  
(to Finnish members only)

11:00 Summit registration open, coffee buffet

### Session 1

12:00 Opening of the summit **Risto Kiviluoma** FI  
IABSE

12:10 Keynote 1

12:40 Keynote 2

13:10 *Break*

13:25 Keynote 3

13:55 Keynote 4

14:25 *Break*

### Session 2

14:40 Keynote 5

15:10 Keynote 6

15:40 Panel discussions

16:20 Close of the day 1 **Risto Kiviluoma** FI  
IABSE

16:30 *Transportation to the harbour Länsisatama  
(Tyynenmerenkatu 8)*

*M/S Silja Europa*

17:00 *Check-in to the cabins*

17:30-19:30 *Buffet dinner, restaurant Buffet Europa*

20:00- *Free socialising, get-together at the restaurant to be  
announced*

## Thursday April 10<sup>th</sup>

*M/S Silja Europa*

07:00 *Buffet breakfast*

08:30 *Check-out from the cabins*

**Session 3** *Conference room of the ferry*

09:00 Keynote 7

09:30 Keynote 8

10:00 Keynote 9

10:30 Closing discussions and close of the day 2 **Risto Kiviluoma** FI  
IABSE

11:00 Leaving the ferry, guided walk to the bus

*Lennusadam Seaplane Harbour, 17 Kūti Street / 6 Vesilennuki Street, Tallinn, Estonia*

11:30 Guided tour in the Seaplane Harbour

12:30 Transport to the ferry

*M/S Superstar*

13:00 Check in to the ferry, Terminal D, Lootsi 13, Tallinn

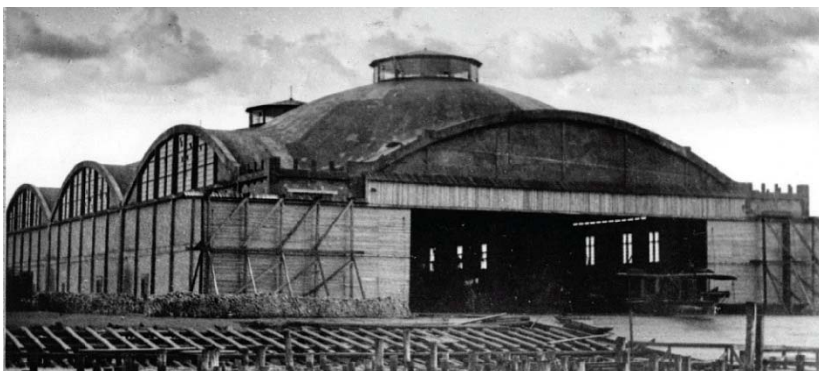
13:30-15:30 Ferry to Helsinki, Finland



*Market square of the city of Helsinki, Finland, as photographed from the South Harbour.*



*Central plaza of the city of Tallinn, Estonia.*



*Lennusadam Seaplane Harbour Museum, Tallinn, with large concrete shell structures build originally 1916-1917.  
Photos [www.lennusadam.eu](http://www.lennusadam.eu).*

## Registration

The on-line registration is open at the summit website <http://www.ril.fi/iabse2014>

Number of seats in the summit is limited. The participants are served in order the registration is made. On-line registration will close April 8, 2014 or at sold out. Registration fees are:

- IABSE or RIL members when registering before the 10<sup>th</sup> March 2014: **620 Eur** (Incl. 37,2 Eur VAT)
- others, regular registration fee: **650 Eur** (Incl. 39 Eur VAT).

The registration fee includes:

- technical program and the coffee buffet in Helsinki (the 1<sup>st</sup> summit day)
- transportation to the harbour for the ship
- ship Helsinki-Tallinn:
  - o ticket with overnight in the ferry (single person cabin, Class A, window)
  - o buffet dinner
  - o technical program in Tallinn (the 2<sup>nd</sup> summit day)
- Program in Tallinn
- Ferry ticket Tallinn-Helsinki.
  - o Lunch in the ferry

Please note that as the overnight is in the ferry, booking of hotel is not needed for those guests arriving to Helsinki by the morning flights the 9<sup>th</sup> April and departing the evening 10<sup>th</sup> April.

For any questions please contact the workshop secretariat: [ville.raasakka@ril.fi](mailto:ville.raasakka@ril.fi) or +358 50 366 8687.

## Venue

Start of the summit takes place in facilities of RIL, Töölönkatu 4, Helsinki. The venue is from walking distance from the main railway/bus station of Helsinki.

M/S Silja Europa is 202 m long ship designed for over 3000 passengers and for 340 vehicles. It currently operates between Helsinki and Tallinn.

## General information

### Language

The official language of the summit is English. Oral presentation and discussion will be in English only.

### Weather in Helsinki region

Mid April is usually the start of spring season in the Southern Finland. Daylight time is already long, with sun rise 6:30 and set 20:30. The average day temperature is estimated to be around 3°C.

### Visa and passport

Finland and Estonia are both countries of European Union and belong to Shengen area. Nationals of the Shengen countries do not need a visa to enter Finland or Estonia. When entering to Finland or Estonia, passengers are required to have proof of identity, such as valid passport or official ID card with photo.



*M/S Sija Europa (photo [www.wikipedia.org](http://www.wikipedia.org)).*

## About IABSE

The International Association for Bridge and Structural Engineering (IABSE) was founded in 1929. Today, IABSE has 4000 members in over 100 countries. The mission of IABSE is to promote the exchange of knowledge and to advance the practice of structural engineering worldwide in the service of the profession and society. To accomplish its mission, IABSE organizes conferences and publishes the quarterly journal Structural Engineering International (SEI), as well as reports and other monographs. IABSE also presents annual awards for outstanding achievements in research and practice that advance the profession of structural engineering.

More information about IABSE:

IABSE Secretariat  
ETH Hönggerberg  
CH-8093 Zurich, SWITZERLAND  
Tel. +41-44-633 2647  
Fax. +41-44-633 1241  
E-mail: [secretariat@iabse.org](mailto:secretariat@iabse.org)  
Internet: <http://www.iabse.org>

## Further information

IABSE Workshop Helsinki 2013  
Finnish Association of Civil Engineers RIL  
Mr. Ville Raasakka  
Töölönkatu 4  
00100 Helsinki, FINLAND  
Tel. +358 50 366 8687  
Fax. +358 207 120 619  
E-mail: [ville.raasakka@ril.fi](mailto:ville.raasakka@ril.fi)