

32nd International Symposium on
Automation and Robotics in Construction and Mining

Connected to the Future

June 15-18 2015 Oulu, Finland



Cover photo by **SICK**
Sensor Intelligence.

CALL FOR PAPERS

Call for papers

The main theme of the symposium is **Connected to the Future**.

The ISARC 2015 Organizing Committee cordially invites you to submit abstract for oral and poster presentations. All the abstracts will go through a two stage blind peer review process before accepted to be presented in the symposium (as a poster or an oral presentation).

Abstract submission deadline is 30th September 2014. Abstracts can be submitted via website www.isarc2015.com

A selection of the best papers submitted will be published on a dedicated issue of the Automation in Construction Journal. These papers will be expanded and fully refereed after the publication of the ISARC proceedings.

Topics apply to the Construction and Mining Industries:

Advanced Computing	Linked Data and Information Models
Advanced Planning Tools	Logistics Systems
Advanced Surveying and Positioning	Machine Control Systems
Augmented and Virtual Reality	Management Systems
Automated Haulage	Materials Handling Systems
Automation and Robotics	Mechatronics
Building Information Modeling (BIM)	Multi-Vehicle Coordination
BIM Integration with Automation and Robotics Systems	Networking and Communications
Collaborative Design and Construction	Novel Mining and Construction Methods
Computational Mechanics	Open and Intelligent Information Transfer
Computing and Conceptual Design	Operator-Assist Guidance Systems
Decision Support Systems	Positioning Methods and Systems
Distributed Computing and Information Management	Project Information Management
Dredging Automation	Process Control and Optimization
Dynamic Work Process and Site Control	Real-Time Systems
Environmental Monitoring	Reliability and Availability
Experimentation with Future Technologies	Remote Mining
Fault Analysis and Control	Robotic Excavation
Field Robotics	Robotized Factories
Fleet Management and Dispatching	Safety Improvement Systems
GIS and Spatial Databases	Semantic Methods and Systems
Hoist Control	Sensing Technology
Human-Machine Interfaces	Service Robots
Human Robotics	Site Control Systems
Instrumentation and Sensors	Space and Extreme Engineering Applications
Intelligent Information Transfer and Management	Supervisory Control
Interoperability	Telerobotics
	Unmanned Measurement and Production Systems
	Web-based BIM
	Working in Extreme Conditions

Finland

Finland is a land of interesting contrasts, such as the four seasons, the Midnight Sun and the winter darkness, urban and rural, East and West.

Lapland

Dark Arctic winters have their counterpart in one of the most iconic of Finnish natural phenomena, the Midnight Sun. In the northernmost parts of Finnish Lapland, the sun stays above the horizon for over 70 consecutive days.

City of Oulu

The City of Oulu is the capital of northern Finland. The Oulu Region has over 200,000 inhabitants and it is the fastest growing region in Finland. From being a town known for tar and salmon, Oulu has evolved into a growing modern centre of competence.

Oulu is internationally known as a city of technology. Today Oulu is a major centre of competence in the field of high technology, particularly IT and wellness technology. Oulu has an international airport and there are about 15 flights to and from Helsinki each day. Oulu railway station is one of the busiest in Finland.

Technical Program

Program will include traditional parallel scientific sessions and case studies. Technical excursions will take place in 17th and 18th of June.

Social Program

Program will include several social events including city reception and dinner. There will be program organized for accompanying persons during the symposium.

Pre Symposium Tour

An overnight touristical pre tour to Lapland to experience the midnight sun will also be organized. Participants will have the possibility to visit Rovaniemi, the official hometown of Santa Claus.

Exhibition and Sponsorship Opportunities

There will be an exhibition during the symposium. We can also offer a lot of different opportunities for sponsorship. For more information contact the secretariat or visit isarc2015.org. This is a unique opportunity to position your company and align your brand with an international convention.



IMPORTANT DATES

Abstract submission deadline 30th September 2014

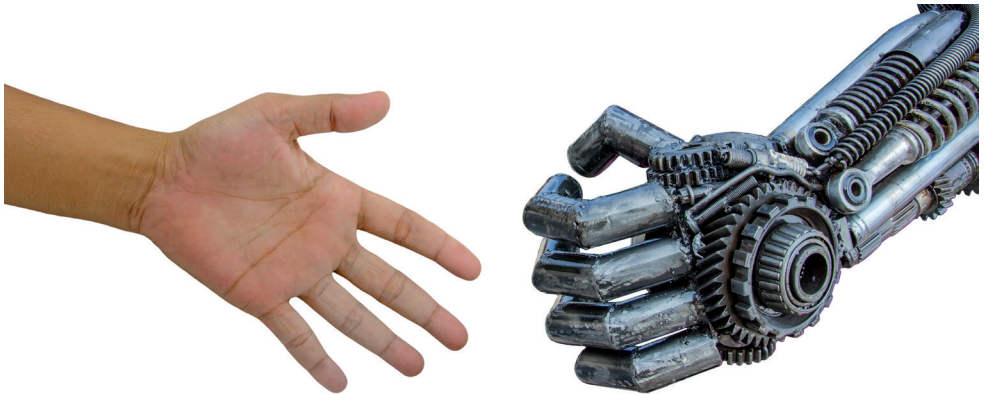
Notification of abstracts 1st December 2014

Full paper submission deadline 30th January 2015

Notification of full papers 31st March 2015

Symposium dates June 15-18 2015

www.isarc2015.org



Symposium secretariat

Mr. Ville Raasakka
Finnish Association of Civil Engineers RIL
Tel. +358 50 3668687
E-mail: ville.raasakka@ril.fi

